



Bowerman Court, Bucknall Place, Watford, WD19



FOR SALE £375,000 Leasehold

Major Estates Harrow LTD ~ 77 High Street, Wealdstone, Harrow, HA3 5DQ
T: 020 8424 8686 ~ E: sales@majorestate.com ~ www.majorestate.com

Major Estates are delighted to offer for sale this purpose built apartment in a fantastic recent modern development. With secure entry to the building and lift access to the apartment it comprises entrance hallway with 2 storage cupboard with one housing the plumbing for the washing machine, master bedroom with fitted wardrobe and en-suite shower room, second double bedroom with wardrobe, open plan living room/kitchen. The kitchen has integrated appliances and exudes luxury with a balcony off the living room. There is allocated secure parking with the flat. Located in a fantastic location with access to shops, supermarket, leisure centre and Carpenders Park station is close proximity.

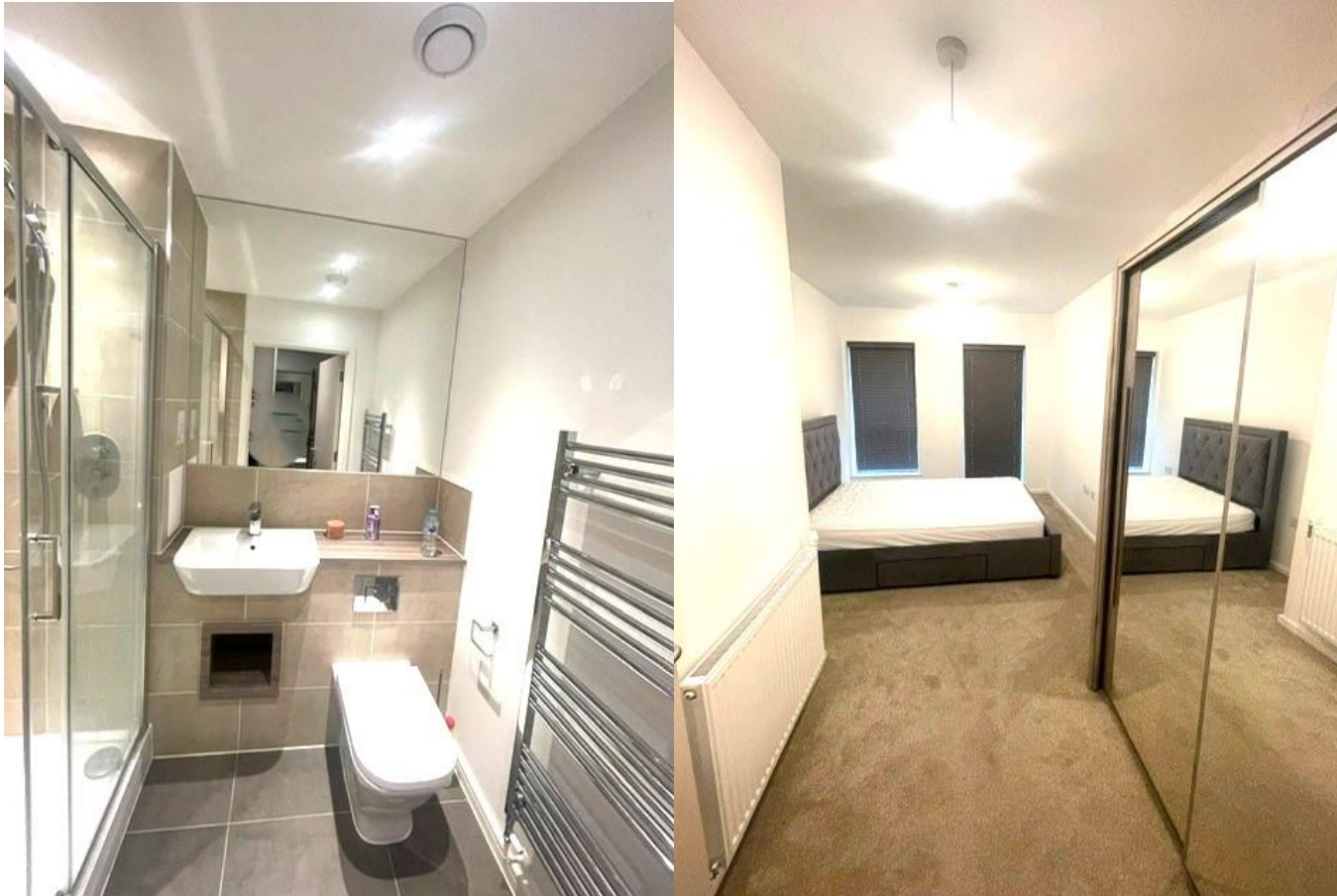
- Excellent Condition
- Purpose Built
- Lift In Building
- Master Bedroom With En-Suite
- Fitted Wardrobes In Both Bedrooms
- 2 Large Storage Cupboards
- Open Plan Living Room/Kitchen
- Integrated Appliances In Kitchen
- Balcony
- Video Entry Phone System
- Allocated Parking
- Close To Carpenders Park Station
- Near Shops/Supermarkets
- Great Schools in Catchment
- Energy Efficient
- Viewing Advised



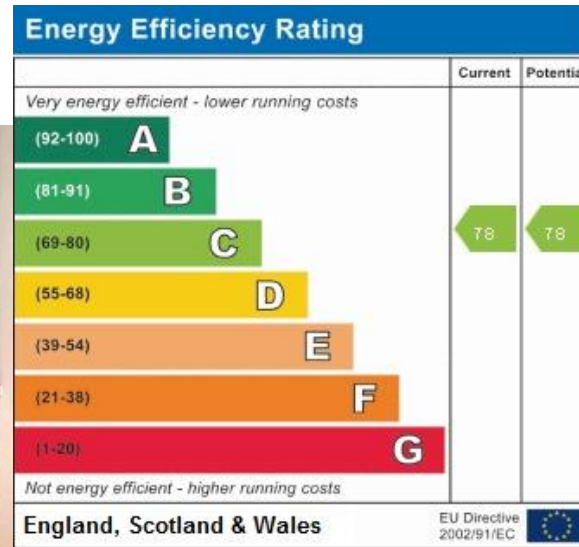
Major Estates Harrow LTD ~ 77 High Street, Wealdstone, Harrow, HA3 5DQ
T: 020 8424 8686 ~ E: sales@majorestate.com ~ www.majorestate.com



Major Estates Harrow LTD ~ 77 High Street, Wealdstone, Harrow, HA3 5DQ
T: 020 8424 8686 ~ E: sales@majorestate.com ~ www.majorestate.com



Major Estates Harrow LTD ~ 77 High Street, Wealdstone, Harrow, HA3 5DQ
T: 020 8424 8686 ~ E: sales@majorestate.com ~ www.majorestate.com



Address:
Bowman Court, 2 D19

Kitchen/Living/Dining Area
8.34m x 3.21m 27'4" x 10'6"

Master Bedroom
4.99m x 2.89m 16'4" x 9'6"

Bedroom 2
4.99m x 2.73m 16'4" x 8'11"

Balcony
3.51m x 1.48m 11'6" x 4'10"

W Fitted Wardrobe
WM Washing machine
B/P Balcony.



Disclaimer

The property particulars are produced in good faith based upon information from the vendor and access for visual appraisal to provide a fair description of the property for the guidance of intending purchasers. These should not be construed as a contract or offer. All details and measurements are approximate and are only a general guide. Any intending purchasers should not rely on them as statements or representations of fact but must satisfy themselves by inspection or otherwise as to the correctness of each of them. Please note, we have not tested the bathroom fittings, kitchen appliances, central heating or electrical systems. If there is any point which is of particular importance to you, we will be pleased to see if we can get more information. Life assurance may be required. Written quotations available.

Mortgages

For a competitive, free, no obligation Mortgage quotation please contact our independent, in-house, whole of market FCA registered Mortgage adviser on 020 8424 8686. We deal with the whole market to find the appropriate residential or buy to let Mortgage deals according to your personal circumstances and subject to status.

Your home is at risk if you do not keep up repayments on a mortgage or other loans secured on it.

