



ESTATE & LETTINGS AGENTS

Wolseley Road, Harrow, HA3



FOR SALE £565,000 Freehold

Major Estates Harrow LTD ~ 77 High Street, Wealdstone, Harrow, HA3 5DQ
T: 020 8424 8686 ~ E: sales@majorestate.com ~ www.majorestate.com

Get yourself on the ladder with this fantastic family home! This mid terrace property comprises downstairs bedroom 3/reception room, living room, downstairs WC and an outstanding extended kitchen/dining room. Upstairs you have 2 double bedrooms and modern bathroom suite with shower cubicle and bath tub. To the rear of the property you have a paved garden area that goes from the side of the house to the rear with the back of the garden mainly laid to lawn. The property has been updated and extended to a very high standard and is in excellent condition throughout.

Located close to Harrow and Wealdstone Station (Bakerloo Line and Overground) and Wealdstone High Street. For those looking to stay fit Harrow Leisure Centre is a short walk away. Also close by are well regarded schools including the 'Outstanding' Whitefriars School and places of worship. Wealdstone High Street.

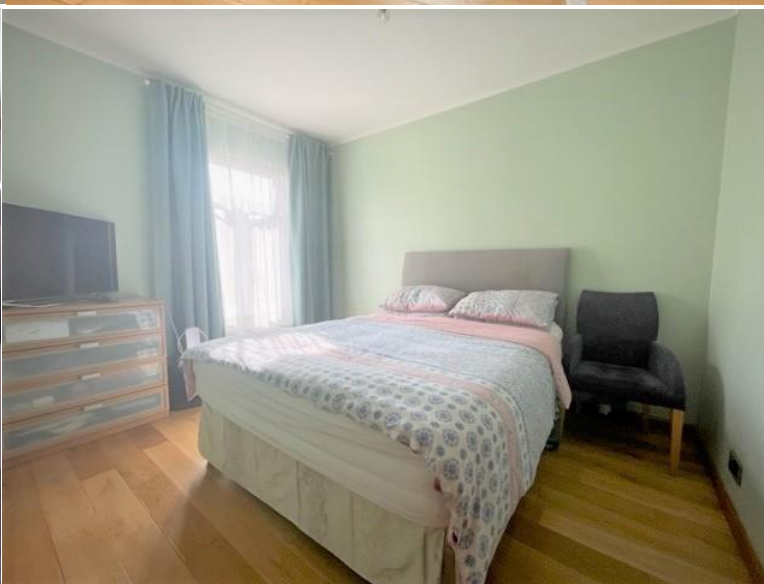
- Excellent Condition
- Downstairs Bedroom 3
- Living Room
- Extended Kitchen/Diner
- Integrated Appliances in Kitchen
- Downstairs WC
- 2 Double Bedrooms Upstairs
- Modern Bathroom Suite
- Bath and Shower Cubicle in Bathroom
- Paved Garden
- Rest Laid To Lawn
- Close To Wealdstone High Street
- Walking Distance Harrow & Wealdstone Station
- Whitefriars School Nearby
- Gas Central Heating
- Megaflo
- Close To Local Amenities
- Chain Free
- Viewing Advised



Major Estates Harrow LTD ~ 77 High Street, Wealdstone, Harrow, HA3 5DQ
T: 020 8424 8686 ~ E: sales@majorestate.com ~ www.majorestate.com



Major Estates Harrow LTD ~ 77 High Street, Wealdstone, Harrow, HA3 5DQ
T: 020 8424 8686 ~ E: sales@majorestate.com ~ www.majorestate.com




Major Estates Harrow LTD ~ 77 High Street, Wealdstone, Harrow, HA3 5DQ
T: 020 8424 8686 ~ E: sales@majorestate.com ~ www.majorestate.com

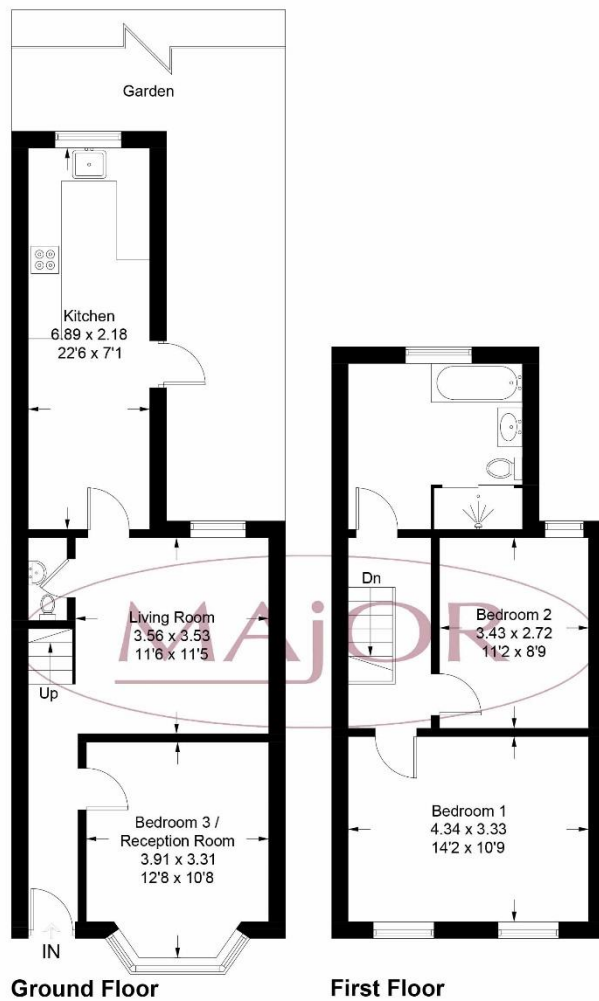


Major Estates Harrow LTD ~ 77 High Street, Wealdstone, Harrow, HA3 5DQ
T: 020 8424 8686 ~ E: sales@majorestate.com ~ www.majorestate.com



Energy Efficiency Rating		
	Current	Potential
<i>Very energy efficient - lower running costs</i>		
(92+) A		
(81-91) B		
(69-80) C		80
(55-68) D	61	
(39-54) E		
(21-38) F		
(1-20) G		
<i>Not energy efficient - higher running costs</i>		
England, Scotland & Wales		EU Directive 2002/91/EC 

Address: Wolseley Road, Harrow, Middlesex HA3



Approximate Gross Internal Area = 87.3 sq m / 940 sq ft

Illustration for identification purposes only, measurements are approximate, not to scale. floorplansUsketch.com © (ID980659)

Major Estates Harrow LTD ~ 77 High Street, Wealdstone, Harrow, HA3 5DQ
 T: 020 8424 8686 ~ E: sales@majorestate.com ~ www.majorestate.com

Disclaimer

The property particulars are produced in good faith based upon information from the vendor and access for visual appraisal to provide a fair description of the property for the guidance of intending purchasers. These should not be construed as a contract or offer. All details and measurements are approximate and are only a general guide. Any intending purchasers should not rely on them as statements or representations of fact but must satisfy themselves by inspection or otherwise as to the correctness of each of them. Please note, we have not tested the bathroom fittings, kitchen appliances, central heating or electrical systems. If there is any point which is of particular importance to you, we will be pleased to see if we can get more information. Life assurance may be required. Written quotations available.

Mortgages

For a competitive, free, no obligation Mortgage quotation please contact our independent, in-house, whole of market FCA registered Mortgage adviser on 020 8424 8686. We deal with the whole market to find the appropriate residential or buy to let Mortgage deals according to your personal circumstances and subject to status.

Your home is at risk if you do not keep up repayments on a mortgage or other loans secured on it.

